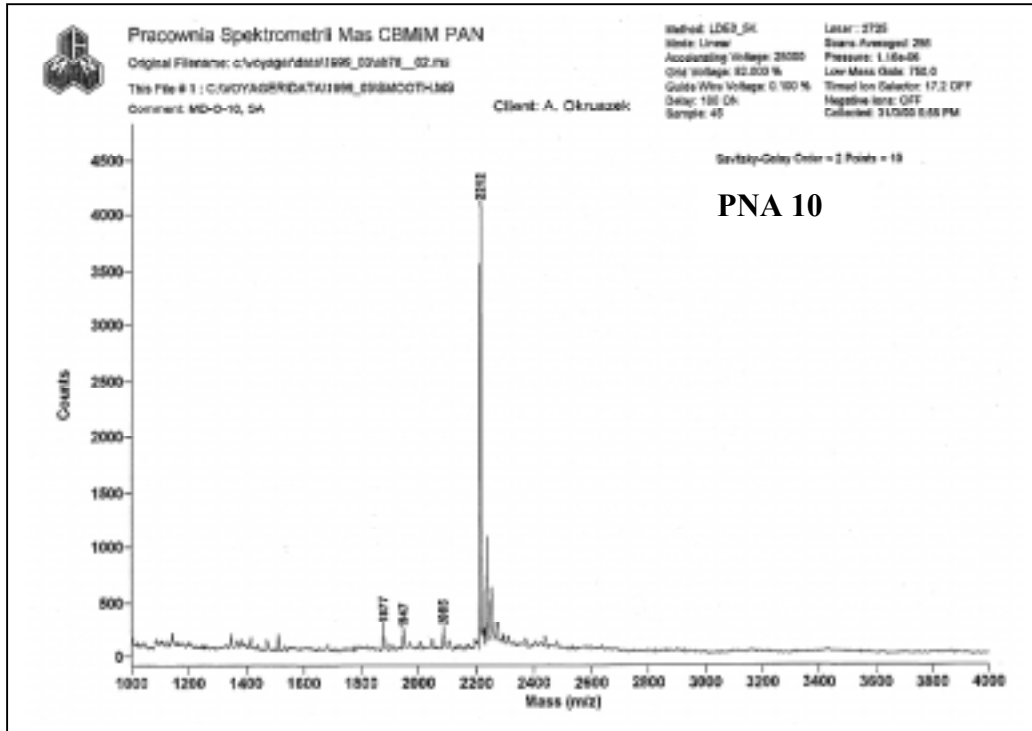
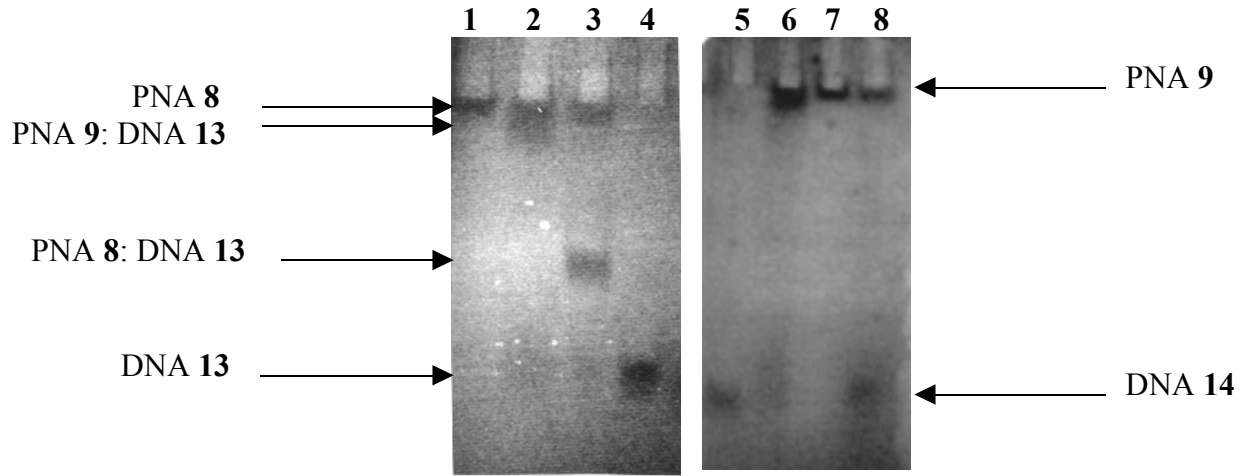


MALDI-TOF mass spectrum of PNA 10





15% Polyacrylamide Gel Electrophoresis (acrylamide:*bis*-acrylamide, 29:1) of *aep*PNA:DNA complexes. Bands were visualized by UV-shadowing, i.e., by illuminating the gel placed on a fluorescent thin-layer silica gel chromatographic plate, F<sub>254</sub>, 20cm x 20cm using UV light. Lane 1: PNA 8; Lane 2: (PNA 9: DNA 13); Lane 3: (PNA 8: DNA 13); Lane 4: DNA 13; Lane 5: DNA 14; Lane 6: (PNA 9: DNA 13); Lane 7: PNA 9; Lane 8: (PNA 9: DNA 14).

#### PNA sequences

**8** H- T T T T T T T t -(β-Ala)-OH

**9** H- T T T t T T T t -(β-Ala)-OH

T = *aeg*PNA-T, t = *aep*PNA -T

#### DNA sequences

**13** 5'- G C A A A A A A A C G -3'

**14** 5'- G C A A A T A A A A C G -3'